

MXL TIMING PULLEYS

METRIC TIMING PULLEY

2.03mm Trapezoidal Pitch

For 6mm Wide Belts

Hub and Flanges

Aluminum

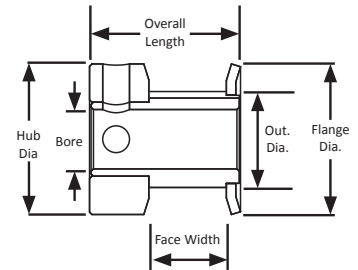
Clear Anodized

Metric Finished Bore

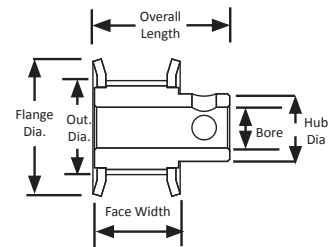


Part Number	No. of Teeth	Type	Pitch Dia. (mm)	Out. Dia. (mm)	Flange Dia. (mm)	Bore (mm)	Face Width (mm)	Overall Length (mm)	Hub Dia. (mm)	Set Screw
10MP025M6CA3	10	6C	6.5	6.0	10.8	3.0	-	14.3	10.8	M2
11MP025M6CA3	11	6C	7.1	6.6	11.4	3.0	-	14.3	11.4	M2
12MP025M6CA3	12	6C	7.8	7.3	12.2	3.0	-	14.3	12.2	M2
14MP025M6CA3	14	6C	9.1	8.6	13.5	3.0	-	14.3	13.5	M2
15MP025M6CA4	15	6C	9.7	9.2	14.1	4.0	-	14.3	14.1	M2.5
16MP025M6CA4	16	6C	10.3	9.8	14.7	4.0	-	14.3	14.7	M2.5
16MP025M6CA5	16	6C	10.3	9.8	14.7	5.0	-	14.3	14.7	M2.5
18MP025M6FA4	18	6F	11.6	11.1	16.1	4.0	9.9	15.9	7.9	2 x M2.5 @ 90°
18MP025M6FA5	18	6F	11.6	11.1	16.1	5.0	9.9	15.9	7.9	2 x M2.5 @ 90°
18MP025M6CA6	18	6C	11.6	11.1	16.1	6.0	-	14.3	16.1	2 x M3 @ 90°
20MP025M6FA4	20	6F	12.9	12.4	17.4	4.0	9.9	15.9	9.2	2 x M2.5 @ 90°
20MP025M6CA5	20	6C	12.9	12.4	17.4	5.0	-	14.3	17.4	2 x M3 @ 90°
20MP025M6CA6	20	6C	12.9	12.4	17.4	6.0	-	14.3	17.4	2 x M3 @ 90°
21MP025M6FA4	21	6F	13.6	13.1	18.0	4.0	9.9	15.9	9.9	2 x M2.5 @ 90°
21MP025M6CA6	21	6C	13.6	13.1	18.0	6.0	-	14.3	18.0	2 x M3 @ 90°
22MP025M6FA4	22	6F	14.2	13.7	18.8	4.0	9.9	15.9	9.9	2 x M2.5 @ 90°
22MP025M6FA5	22	6F	14.2	13.7	18.8	5.0	9.9	15.9	9.9	2 x M2.5 @ 90°
22MP025M6CA6	22	6C	14.2	13.7	18.8	6.0	-	14.3	18.8	2 x M3 @ 90°
24MP025M6FA5	24	6F	15.5	15.0	20.1	5.0	9.9	17.5	11.2	2 x M3 @ 90°
24MP025M6FA6	24	6F	15.5	15.0	20.1	6.0	9.9	17.5	11.2	2 x M3 @ 90°
25MP025M6FA6	25	6F	16.2	15.7	20.7	6.0	9.9	17.5	11.9	2 x M3 @ 90°
28MP025M6FA6	28	6F	18.1	17.6	22.7	6.0	9.9	17.5	12.5	2 x M3 @ 90°

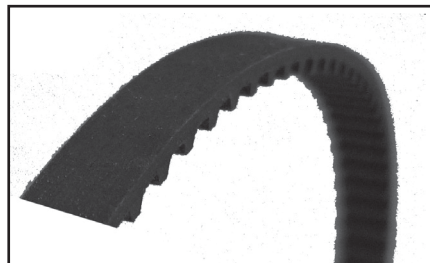
TYPE 6C



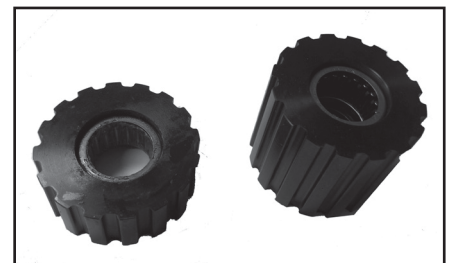
TYPE 6F



For MXL pitch pulley stock and flanges, see page 250.



For matching MXL pitch belts, see page 180.



For idler pulleys, see page 366.